



The Ferry Project

# How do you meet the full range of client needs in a rural setting?

Keith Smith CEO The Ferry Project

January 2025



## Ferry Project

- Founded in 1999 (25th Anniversary!)
- Has supported over 3500 homeless people
- On average supports 300 people a year either homeless or at risk of Homelessness
- Operates out of OV a Grade 2\* listed building built in the 17 and 18 Centuries.

# Wisbech



- Economy based on food production.
- Population 34,000
- Estimated 30% of the population Eastern European Migrants.
- Much of the work force employed by Gangmaster on zero hour contracts.
- On average 2% of the adult population homeless each year.



## Ferry Project Model

Research shows that all homeless people have experienced trauma in their lives. To have the best chance of a successful recovery, we need to provide:

- Support with Trauma-Informed Care (TIC).
- A Psychologically Informed Environment (PIE) which is appropriate to their needs.
- Opportunities to develop new skills which will help them in their life.



## Trauma Informed Support



- All staff have been trained on Trauma informed care.
- Support staff involved in reflective practise with external provider.
- Staff given permission to “try things”.
- Small funding pot developed for unusual expenses.

# PIE

## 7 kinds of supported accommodation

1. Destiny Haven
2. Sunrise Haven
3. Clarkson House hostel
4. Jubilee Place
5. Bedsits and 1 Bed flats
6. 2 HMOs
7. Floating support to people living in RP housing.



# Destiny Haven



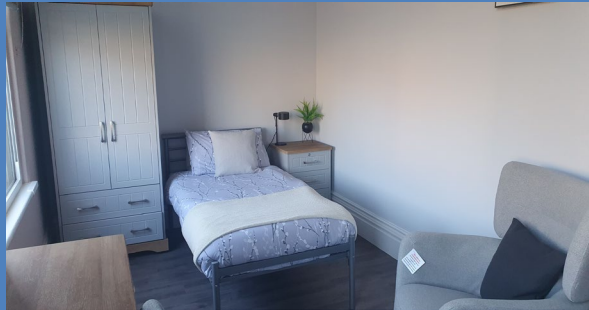
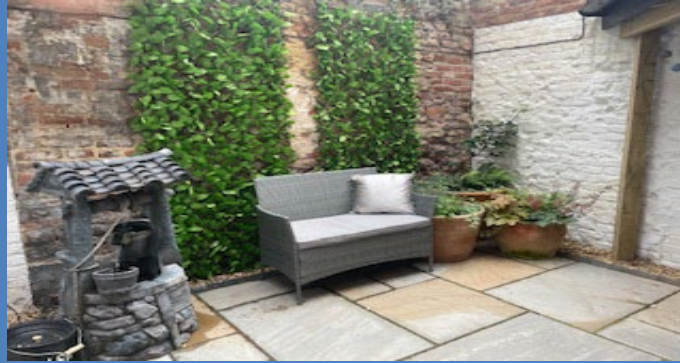
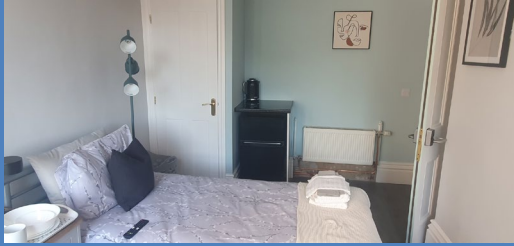
- Built to provide the first stage accommodation for clients coming off the streets or from sofa surfing.
- Rooms small but with ensuite.
- No corridors clients can leave site easily.
- Assessments.
- Average stay 6 weeks.

# Sunrise Haven

- 3 bed unit built within the main building to provide women only accommodation.
- No shared bathrooms, communal lounge, communal kitchen
- Opened 6 months ago
- Part of the Housing Related support contract



# Sunrise Haven





## Clarkson House Hostel

1. Old Hostel 24 beds all ensuite
2. Turning into 3 areas – High need, short term and long term accommodation
3. Room sizes and configuration all different.
4. Different cooking facilities.



## Jubilee Place

1. 6 modular homes
2. Built 2 years ago
3. Built for rough sleepers who cannot manage in the hostel configuration all different.
4. Floating support.

# Opportunities Health Partnerships

- Mental health nurse
- Counselling
- Art Gallery – art classes
- North brink
- Voluntary Sector Network
- Integrated neighbourhoods
- Health support workers
- Smoking Cessation workers
- County Council – lunch club.
- Local Business – Osteopath, Eye clinic, Physiotherapy





## Opportunities Cookery School

- Professional chef.
- 1:1 sessions
- Group sessions



Thank you and questions.